

CME Robotic Meat Processing Cell

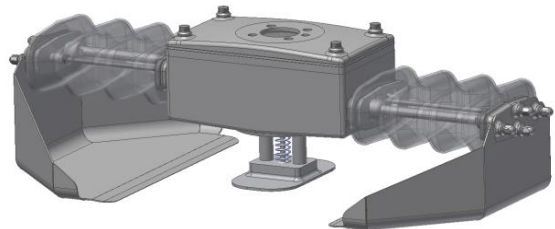
Performance & Quality

- Designed and manufactured using EHEDG guidelines to suit primary meat processing sector
- Picking, orientating and placing 60 items per robot per minute
- Vision inspection for product identification
- Hygienic design
- Full wash-down capability
- PLC controlled with touch screen visualisation
- Staubli Robotics HE robot range
- Designed and manufactured in the UK
- CE Marked / CSA Compliant
- Gripper designed to suit customer product
- Cell size to suit customer production requirements based on modular design approach



General Operating Requirements

- Electrical – 4KW (dependant on options)
- Pneumatics – 1.5m³/H @ 6 Bar (per robot)



Options

- Gripper / end effector to suit customer product
- Length / number of robots to suit production rate requirements

